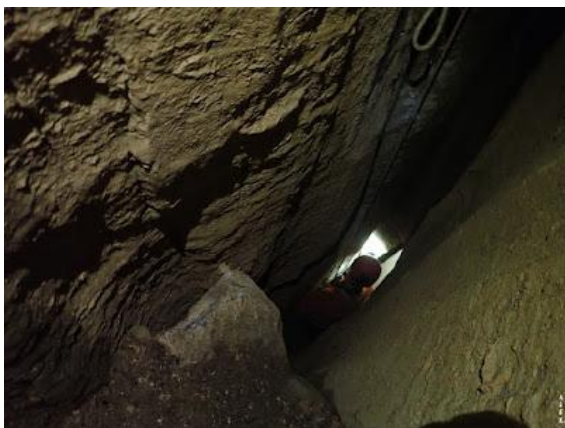


## TORCA DEL SOL - CUEVA DEL BECERRAL

We are pleased to present a caving route that is both new and old in the upper Ason Valley. It's old because the connection between the two caves was explored in 1995 by the French explorers Patrick and Sandrine Degouve, and it's new because it had been forgotten since then, and there were likely no further attempts at the complete traverse given the untouched state of Torca del Sol. In contrast, the Becerral cave, much better known in the past, has been the subject of numerous visits, which have become evident, and not in a positive way. Therefore, the new traverse of Los Santos has been reborn and perhaps, in time, will become a minor classic of the upper Ason Valley.



Despite being a short route in terms of elevation gain and length, Torca del Sol proved challenging to find its entrance, hidden by vegetation and partially blocked by earth and boulders. Time was also spent overcoming a critical obstacle in a narrow section of one of the shafts. Finally, we attempted to determine the best way to equip it for double climbing, that is, for traversing. This proved difficult due to the predominantly narrow morphology of the cave. Ultimately, we decided to equip it with fixed and intermediate ropes in the narrowest sections and use personal ropes for pitches where there is no friction with the wall.



As both caves are currently in their condition, it can be described as a modest traverse with vertical sections and some narrow passages in Torca del Sol. The river runs at the base of the shafts, and all the way to the exit at Becerral, the water in some pools can be knee-deep. Torca del Sol has been equipped with 10mm parabolts and 6-7mm stainless steel quick links. There are fixed handrails, and the first half of the 53-meter shaft has both fixed and broken ropes. Only a couple of 35-meter ropes will be needed for the first 27-meter shaft and the final free-hanging section of the 53-meter shaft, where the ropes don't rub. In short, a traverse suitable for beginners in the dark world. An activity that won't take much time and reveals a hidden gem between the extensive Gándara system and the Asón cave network.



## ACCESS

25 minutes.

Coordinates of TORCA DEL SOL (WGS84) UTM 30T 0452232 4782571 Alt: 816m

We parked our vehicles in the large parking area at the Asón mountain passes. Already equipped, we continued along a path that runs alongside a fence. When the path turns to the right, we left it and continued straight ahead. Caution: it is important to choose the right route up a steep meadow, as the terrain beyond is a large, complex, and difficult limestone pavement. The last part is the most uncomfortable, but it doesn't take long to reach the sinkholes where Torca del Sol is located. At the top, it's much easier; there is a cattle track that skirts these depressions. Torca del Sol is located 3 or 4 meters from the path and on the edge of one of the sinkholes. The entrance is somewhat hidden, under a boulder.



## DESCRIPTION

Descent: 1 hour

The first handrail leads us into the first 27-meter vertical drop of the sinkhole. This shaft is somewhat narrow at the beginning but widens gradually. At its base is the next handrail for the second vertical drop, a 53-meter shaft with a fixed rope in its first half. (at the bottom of the P27, a fixed traverse and a fixed ascent line lead to another fixed line before you reach the hangers for the final pull down). This shaft is somewhat narrow at the beginning but widens in the second half. Halfway down, there is another handrail to re-fix our rope and reach the Becerral River. At the base of the shafts, the only way forward is along the river, navigating some ledges and shallow pools; the riverbed is slippery. Shortly after, we will see a black hose that collects all the river water to supply the town's drinking water. Following the pipe through a comfortable passage leads us out of the cave to a rocky outcrop directly above the road.

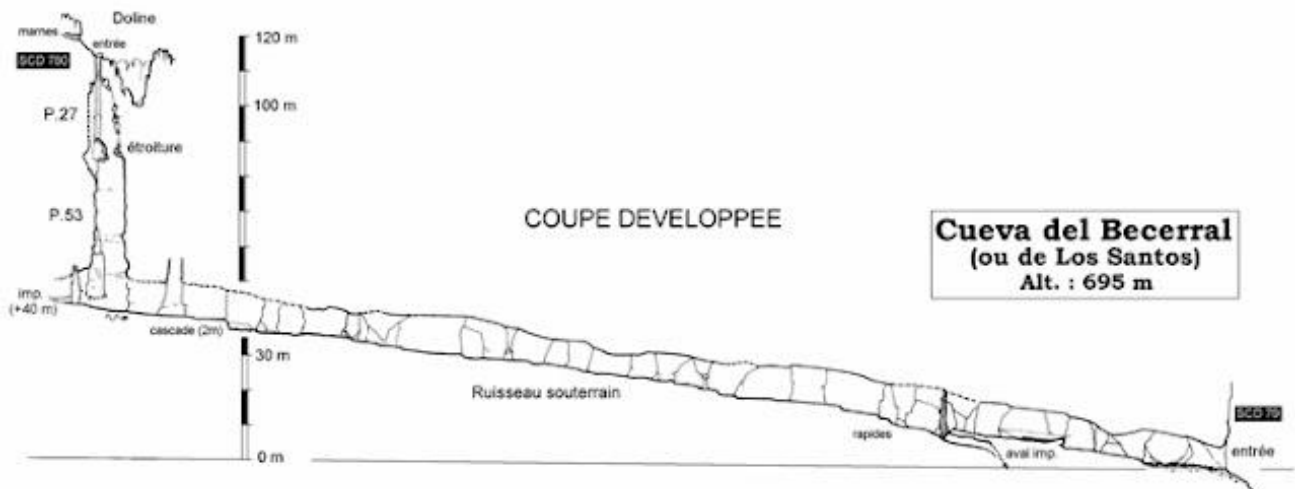
# Traversée de Los Santos

Soba - Province de Santander

Dév.: 490 m

Déniv.: 113 m

**Torca del Sol**  
Alt. : 808 m



Topographie - S.C.Djon 1995 (P. et S. Degouve); Atlas 1988 (C.Puch)

RETURN

10 minutes.

Coordinates of CUEVA DEL BECERRAL: UTM 30T 0452486 4782376

Carefully descend the steep section to the road. Then return to the Collados parking area, which is a few minutes away on the left.