

## ***Cueva de la Carrera***

### ***Location***

<https://www.wikiloc.com/caving-trails/cueva-de-la-carrera-arredondo-225687516>

The cave is located in Socueva, a town in the municipality of Arredondo.

To get to it you have to take the detour from Arredondo to Socueva and after a few meters look for parking (where we parked we would fit 4 well-placed cars).

The approach to the cave begins on the path that was used in the vertical **kilometer race to the Mosquiteru de Arredondo**, today it is difficult to follow it, since the vegetation has practically eaten it.



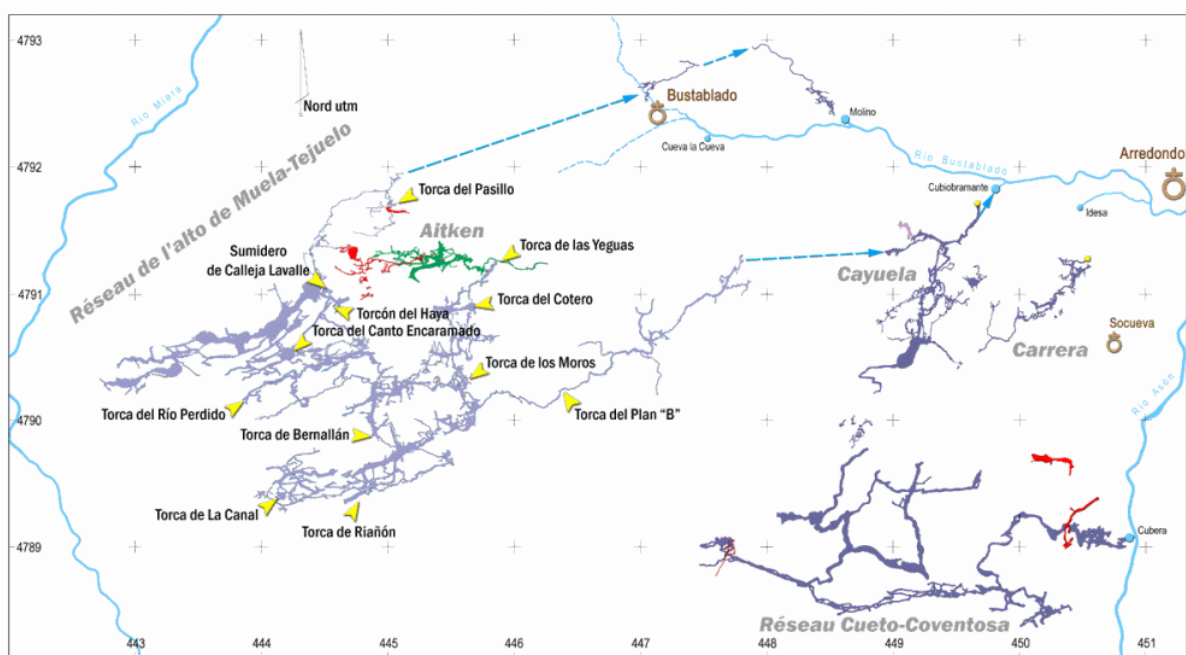
Photo by Virginia and Ruben

In fact, we went around a lot because we couldn't find the path and it also started to rain very intensely. The path became a skating rink of mud and cow shit, and of course, with an extra spikes to activate the circulation. To all this, you have to be very careful with slips, since there is a good fall. I would say it took us about 1h 15m to find it.

## ***A bit of history***

The cave was discovered in 2013 by P. Degouve and G. Simonnot of [S.C. Dijon](#), while they were clearing the vegetation for a new trail of the traditional race held every year in Arredondo.

It is currently still being explored due to the great potential it presents as it is so close to Tonio-Cayueta; It consists of a development of 8,524m and 138m deep.

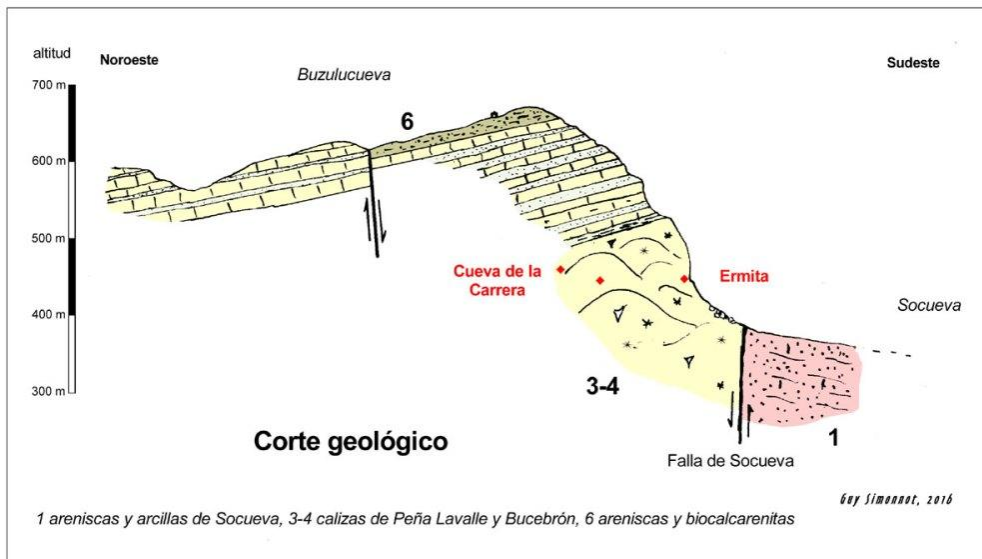


Source: S.C. Dijon website

Actually the first visitors were the bears, a fact that is confirmed after the sighting of around 25 bear houses in the Galerie des Griffades a few meters from the entrance. During its course it is also possible to observe deep scratches on the pressure tubes.

## ***Geology and hydrology***

The cave develops in the limestone formations of the northern flank of the Socueva pseudo-anticline and is particularly integrated into a strip of land between two faults, the Socueva fault to the south and the Buzulucueva fault to the north.



Source: S.C.

Dijon website

The waters of the cave emerge along the Bustablado River, the most likely upwelling being that of the Idesa spring - still to be confirmed.

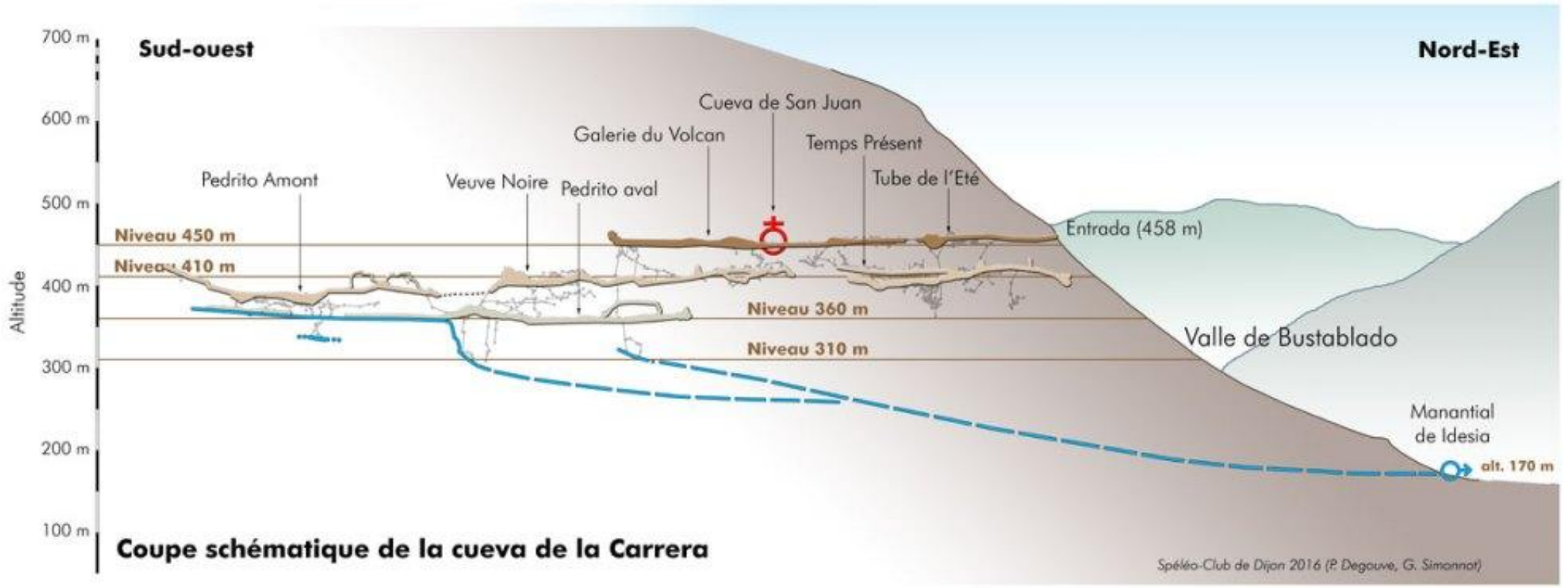
The now fossil conduits of the cave were formed when the base levels of the Bustablado and Asón rivers were high, as they descended over the years, the water made its way between the karst fractures giving rise to new conduits now inactive, and so on until it reached the last active level of Pedrito Canyon.

### **Description**

The cave consists of four levels, the first, called 450 due to the altitude, being the entrance.

The cavity is completely marked, having been discovered in 2013 it has been properly protected before many people pass through and its state of conservation is great. Thank you for the work you did!

As soon as you enter, you find the Tube de l'Eté, a small duct that expands as you go, reaching a larger room, in which there is a crossing. To the right you would visit the Galeria des Griffades, where you can see the bear bushes and scratches throughout the conduit.



Source: S.C. Dijon website



Returning to the same crossroads, but continuing straight on, we head towards a large room, where we have to look for the head of the 12m well that will leave us on level 410. To get to the well, you can either descend between the formations following the reflectors or you can walk horizontally until you find a knotted rope that descends a steep mud ramp. The best option is the first one, without a doubt. The well is well equipped with parabolts, but it is necessary to put **a rope of about 25m and 6 carabiners approx.**

When we reach the base of the well, we find ourselves in the Galerie du Temps Présent, which you can walk on the left or right.

First we went to the right (looking towards the well), crossed the gallery between blocks and followed the marking, observing a multitude of speleothems along the way.



Photo by Virginia and Ruben

Then we went back to the base of the well to continue in the opposite direction, following the milestones and the multitude of reflectors (thank goodness there are many!). Thanks to them we arrive without loss avoiding the blocks until we reach the Escalade de l'Eventail of **12m installed** in a fixed area, the equipment is somewhat deteriorated and the rope is swollen. It is advisable to **carry another rope** in case it is in bad condition. Once at the top, we find level 450 again, as at the entrance.

After walking a stretch between blocks, we arrive at the Galerie du Volcan, adorned with a curious speleothema that gives its name to the gallery, the Volcano. We were lucky to find it full of water, since those days a strong storm had entered with abundant rain. We made a well-deserved stop to take several photos, which thanks to the spotlights that Virginia and Rubén were carrying were great!



Photo by Virginia and Ruben

Once the objective was achieved we returned to the outside, in the end the visit was prolonged and we left later than planned, but at least it was not raining anymore. Miry was waiting for us outside, and after a day of delay, she finally arrived!

A highly recommended cavity with beautiful formations throughout its course! For the record, apart from the areas we visited, there is much more cave to see, which surely does not leave you indifferent.